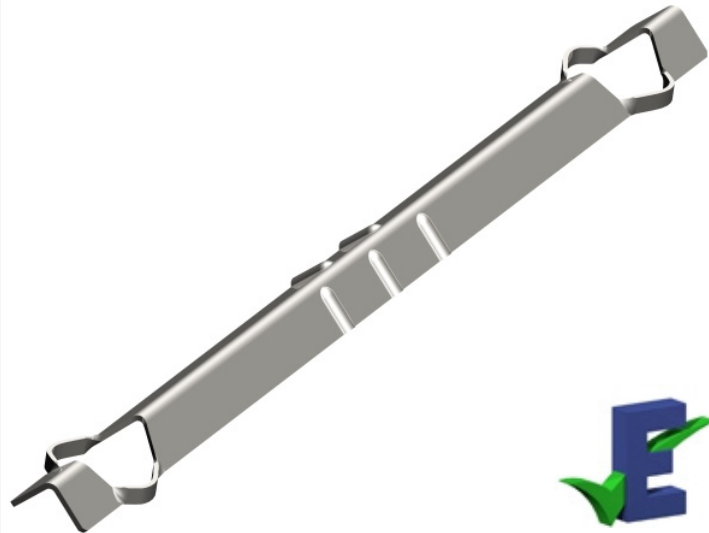


# ACS 2000 Range Tie

- ✓ **Heavy duty cavity wall tie**
- ✓ **BS EN 845-1:2003 compliant**
- ✓ **Masonry – Masonry**  
- Symmetrical tie
- ✓ **Austenitic Stainless Steel**  
- Material Reference 3
- ✓ **50 – 175mm Cavity**



Approved (Type B)

## Technical Data

The ACS 2000 range tie is a multi purpose cavity wall tie designed to exceed the requirements of a type 1 tie as specified in BS EN 845-1: 2003. The tie is capable of achieving the loads required of a type1 tie due to its high sectional properties and specially designed embedment features at each end of the tie. The tie is resistant to water crossing a cavity due to the integrated 'drip' features that serves to prevent the transgression of water from the outer leaf to the inner leaf of a building even when installed with an angle of up to 5° in an unfavourable direction. The minimum mortar joint thickness for which this tie is intended for use is 10mm.

## Installation & Best Practice

Wall ties should typically be installed at a density of at least 2.5 ties/m<sup>2</sup> for walls in which both leaves are thicker than 90mm. This can be achieved by spacing the ties at 900mm horizontal centres and 450mm vertical centres, staggered at alternate courses.

Wall ties should be evenly distributed over a wall except around openings or at an un-bonded panel edge where the tie density should be increased to 225mm vertical centres within 225mm of the opening or edge.

The length of the tie should be sufficient to allow an embedment of at least 62.5mm meaning that the minimum embedment of 50mm is always achieved after allowing for site tolerances.

Minimum mortar class and designation	Tensile load capacity N	Compressive load capacity N
M12 (i)	5000	5000
M2 (iv)	2500	2500

Nominal cavity width mm	Tie length mm
50 – 75	200
76 – 100	225
101 – 125	250
126 – 150	275
151 – 175	300

For further information or technical assistance please contact the ACS Technical Department on 0870 850 0860 or email [technical@acsstainless.co.uk](mailto:technical@acsstainless.co.uk)

**LEEDS**  
Cross Green Approach  
Cross Green Industrial Park  
Leeds LS9 0SG  
Tel: +44 (0)113 391 8200  
Fax: +44 (0)113 391 8209

**LONDON**  
Crown House  
Home Gardens  
Dartford  
Tel: +44 (0)1322 424 510  
Fax: +44 (0)1322 424 504

**GLASGOW**  
Festival House  
150 Brand Street  
Glasgow G51 1DH  
Tel: +44 (0)141 314 0048  
Fax: +44 (0)141 314 0026

